



ETC6000 Remote 4G Monitoring System

The ETC6000 Remote 4G Monitoring System is a revolutionary addition to ETC's 6000 series Burner Control Systems. With IoT-enabled connectivity and real-time insights, it empowers facility managers, operators, and service teams with real time monitoring data to achieve new levels of efficiency and sustainability.

Features

- **Security:** Data transmission and remote commands are encrypted, ensuring that only authorized personnel can access or control the system.
- **Remote Real-time monitoring:** With a 4G enabled system, plant operators can remotely monitor boiler performance including but not limited to the following:
 - Temperature
 - Pressure
 - Modulation
 - O2 Trim
 - Event Logs
 - Fuel Profiles
 - Option Parameters among many others.All information is accessed via a web browser and allows operators to troubleshoot any issues which minimizes the need for on-site intervention. While the base system is designed for monitoring only, ETC can provide systems with remote operation allowing operators to adjust certain parameters such as the set point, changing fuel types and the ability to remotely start and stop the system.
- **Industrial Automation Integration:** The system supports integration with industrial automation frameworks, streamlining operations across complex facilities.

Benefits

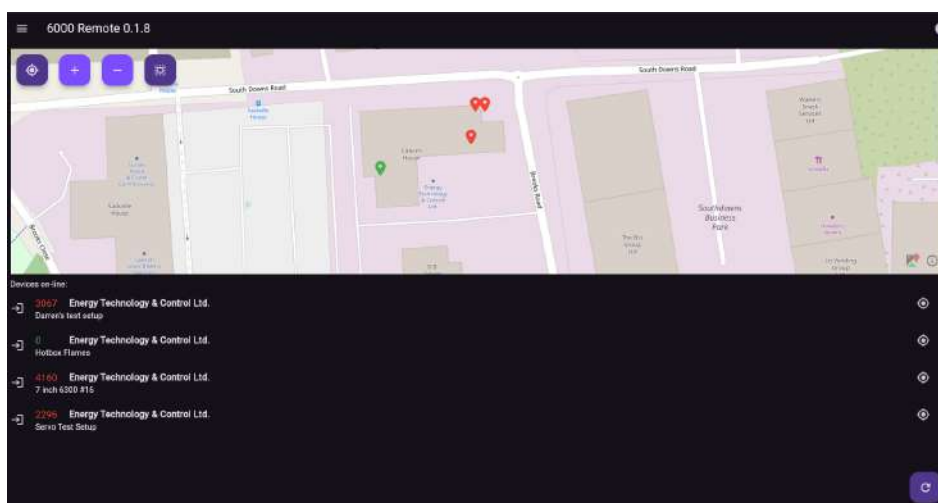
- **Reduced Operational Costs:** By enabling remote monitoring and control, plant operators can minimize the need for on-site visits, saving time and labour costs. The ability to forecast maintenance feature also helps in avoiding expensive repairs and downtime.
- **Increased Flexibility:** Service Providers can manage multiple burners or boilers across various locations without being physically present, which proves enhanced operational flexibility this is particularly beneficial for boilers located in remote or difficult to reach locations.
- **Enhanced Performance Tracking:** The ability to view data over time offers valuable insights into the individual systems performance. With these insights, companies can fine-tune their operations to achieve maximum efficiency and lower energy consumption.
- **Compliance and Reporting:** Detailed data logs enable alignment with emissions regulations and provide an audit trail for regulatory reporting.

The ETC6000 Remote 4G Monitoring System is a powerful enhancement for the ETC6000 series burner control systems, bringing the advantages of modern connectivity and data accessibility directly into the hands of facility managers, operators, and service teams. Designed with a focus on flexibility, reliability, and ease of access, this system enables users to remotely monitor burner control operations from virtually any location with 4G network availability, making it especially valuable for facilities where on-site monitoring can be challenging or where oversight across multiple locations is required.

The 4G-enabled system provides real-time insights into burner performance, which means operators can quickly identify and address potential issues without needing to be physically present at the burner's location. This real-time access not only improves response times but also supports continuous optimization of combustion efficiency. By being able to monitor controls on demand, users can make informed, data-driven decisions that enhance fuel efficiency, reduce emissions, and extend equipment life—delivering tangible benefits in cost savings and environmental impact.

Beyond immediate performance insights, the ETC6000 Remote Monitoring System features continuous data logging, capturing a comprehensive record of burner and boiler data over time. This stored historical data becomes a critical tool for facilities that value proactive maintenance and reliability. By analyzing trends in burner performance data, operators can pre-emptively detect wear patterns, performance degradation, or recurring issues that may otherwise lead to unplanned downtime. The system also supports compliance efforts by documenting operational data, which can be essential for meeting industry standards and regulations on emissions and safety.

For facilities looking to optimize their burner control processes, the ETC6000 Remote Monitoring System offers an invaluable advantage. Service teams, particularly, benefit from this system as they can diagnose issues remotely, potentially solving problems without the need for an on-site visit. This feature is particularly useful in reducing service costs and minimizing equipment downtime, while also empowering service teams to support multiple facilities more efficiently. In a market increasingly focused on both operational efficiency and environmental responsibility, the ETC6000 Remote 4G Monitoring System provides a robust solution that aligns with these priorities. By enabling comprehensive, remote oversight and long-term data analysis, this system supports the pursuit of safe, efficient, and sustainable combustion practices across industries. Whether for single-site operations or multi-location networks, the ETC6000 Remote Monitoring System delivers a level of control and insight that enhances the overall value and performance of the ETC6000 series burner control systems.



If you need further information, a quote or advice for a project, contact us:

Touch the links 



info@innoburn.com



www.innoburn.com

InnoBurn
Customized Combustion Solutions